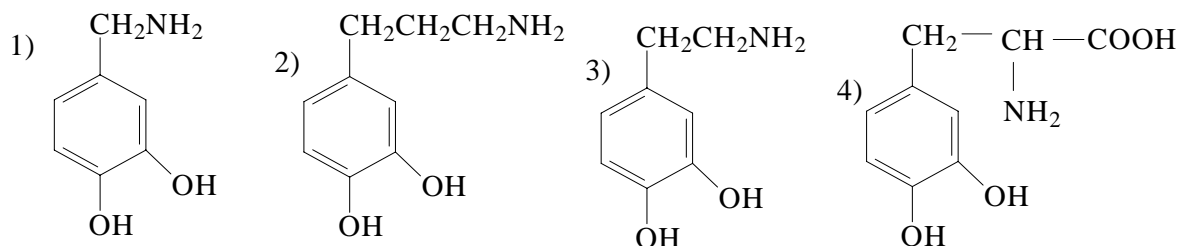


## 16. CHEMISTRY IN EVERY DAY LIFE

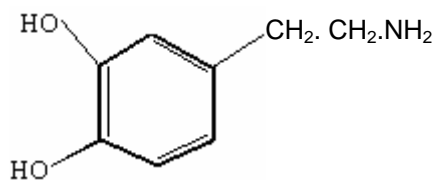
### PREVIOUS EAMCET BITS

1. Parkinson's disease is linked to abnormalities in the levels of dopamine in the body. The structure of dopamine is (2009 E)



Ans : 3

Sol: Dopamine structure



2. Barbituric acid is a condensation product of A and B, A, B are (2009 M)



Ans : 4

Sol: Reaction



3. Match the following (2008 E)

List - I

- (A) Oxyhemoglobin  
 (B) Aspirin  
 (C) Hemoglobin  
 (D) Chlorophyll

List - II

- (i) Analgesic  
 (ii) Oxygen carriers  
 (iii) Photosynthesis  
 (iv) Oil of winter green  
 (v)  $Fe^{2+}$  paramagnetic

The correct match is

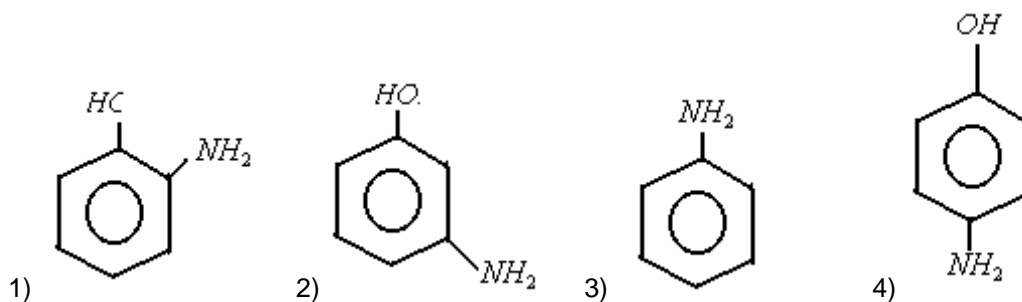
A	B	C	D	A	B	C	D
(1) v	i	ii	iii	(2) iv	ii	i	iii
(3) iii	i	ii	iv	(4) v	ii	iii	i

Ans : 1

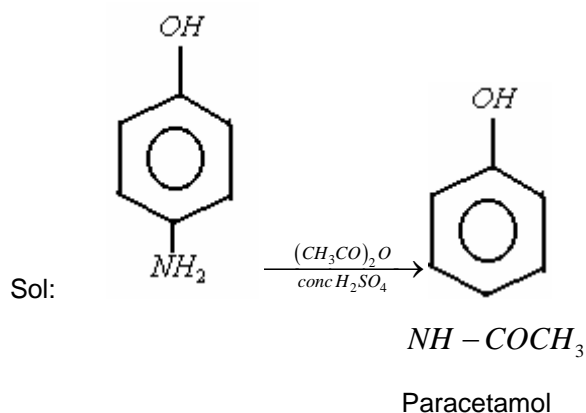
- Sol: Oxyhaemoglobin – Fe<sup>2+</sup> paramagnetic A-(v)  
 Aspirin – Analgesic B- (i)  
 Haemoglobin – Oxygen carriers C-(ii)  
 Chlorophyll – Photosynthesis D – (iii)

4. Which of the following gives paracetamol on acetylation

(2005 M)

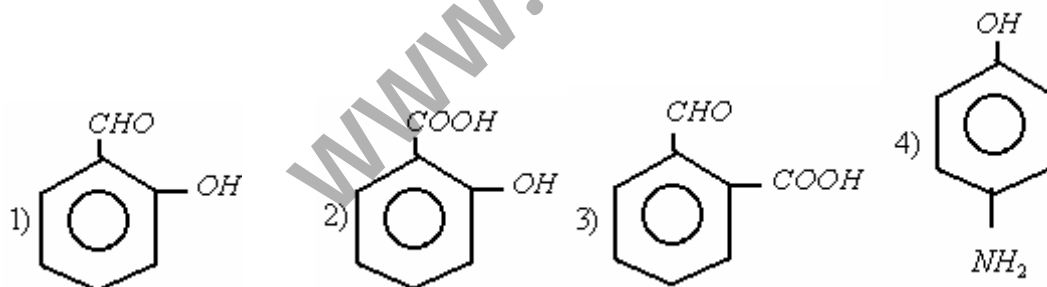


Ans : 4

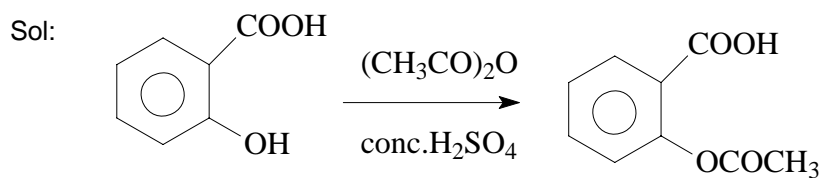


5. Which one of the following compounds give aspirin on reacting with acetic anhydride in the presence of con. H<sub>2</sub>SO<sub>4</sub> ?

(2003 E)



Ans : 2



\*\*\*